

POWERED BY EDUCATION

# CHARTER VS. MAGNET

## PUBLIC OR PRIVATE



Charter schools are public schools.

Magnet schools are public schools.



## REGULATION

Charter Schools are operated by independent, non-profit governing bodies.

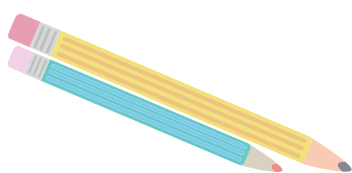
Magnet Schools are operated by the school district.

## DEFINITION



Parents, teachers, and community leaders sign a "charter" or contract with a school district or state agency to create a charter school and give students more educational options than their assigned school.

Magnet schools are public schools that offer specialized curriculum and instructional approaches, such as technology, humanities or a science focus.



## CURRICULUM

Charter schools have flexibility over classroom hours, curriculum, and employment policies. However, charter students are measured by the same academic standards as traditional public school students.

Typical educational themes that magnet schools focus on include:

- STEM
- Fine and Performing Arts
- International Baccalaureate
- CTE
- World Languages (Immersion)

## ENROLLMENT



Enrollment is open to all students who wish to attend. Charter schools accept students on a first-come, first-serve basis and may conduct a lottery if needed.

Enrollment is regulated to ensure school remains racially balanced – regulations can include admissions criteria, lottery system, or seats set aside for district residents.